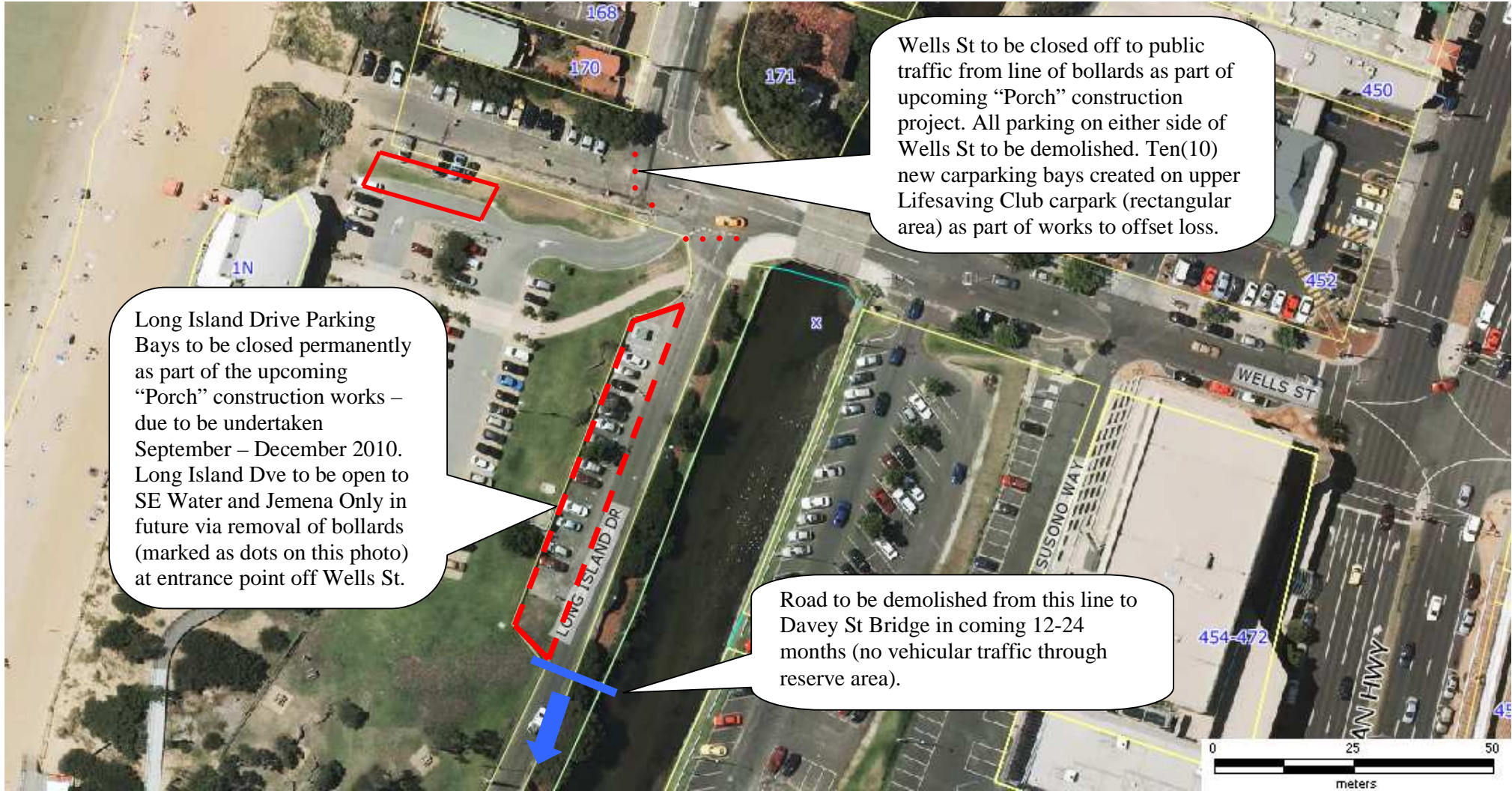




Long Island Dve Parking



Long Island Drive Parking Bays to be closed permanently as part of the upcoming "Porch" construction works – due to be undertaken September – December 2010. Long Island Dve to be open to SE Water and Jemena Only in future via removal of bollards (marked as dots on this photo) at entrance point off Wells St.

Wells St to be closed off to public traffic from line of bollards as part of upcoming "Porch" construction project. All parking on either side of Wells St to be demolished. Ten(10) new carparking bays created on upper Lifesaving Club carpark (rectangular area) as part of works to offset loss.

Road to be demolished from this line to Davey St Bridge in coming 12-24 months (no vehicular traffic through reserve area).

MGA Zone 55 (GDA 94)
 Scale: 1:954:
 Issued by: Gary Marshall
 Date Printed:

 Wednesday, 4 August 2010
 Time Printed: 9:00:06 AM

Disclaimer
 Contains Council information © Frankston City Council, 2009
 Reproduced by permission of the Information Services Section, Frankston City Council.
 Contains Vicmap information © State of Victoria, Department of Sustainability and Environment, 2009
 Reproduced by permission of the Department of Sustainability and Environment.
 This material may be of assistance to you but the State of Victoria and its employees and Frankston City Council do not guarantee that the publication is without flaw of any kind or is wholly appropriate for your particular purposes and therefore disclaim all liability for any error, loss or consequences which may arise from your relying on any information contained in this material.
 You are hereby notified that any use, dissemination, distribution or reproduction of this information is prohibited and must be used for personal use only.
 The information contained herein must not be used in any manner that could breach any criminal, federal, state or local law.